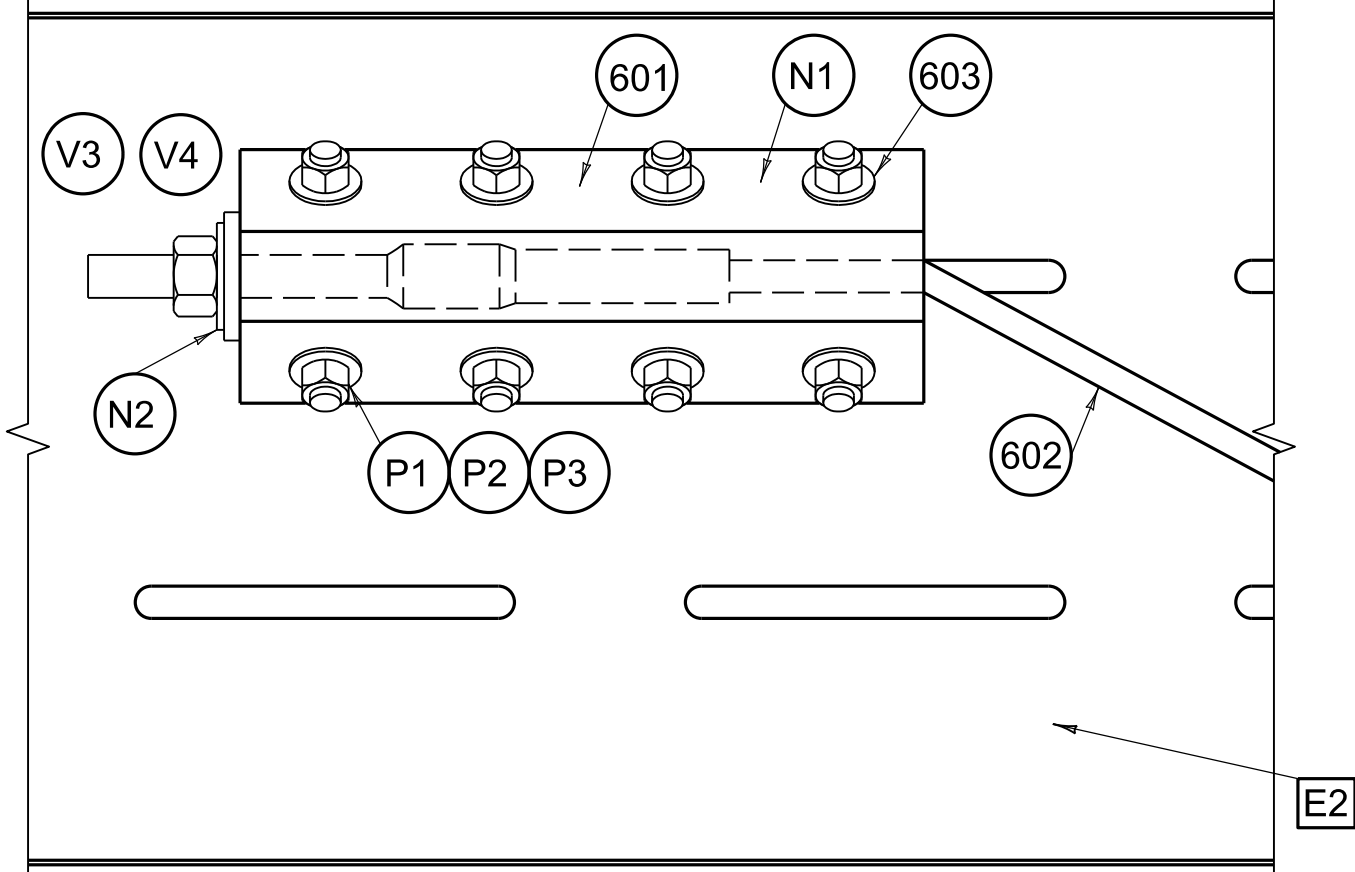
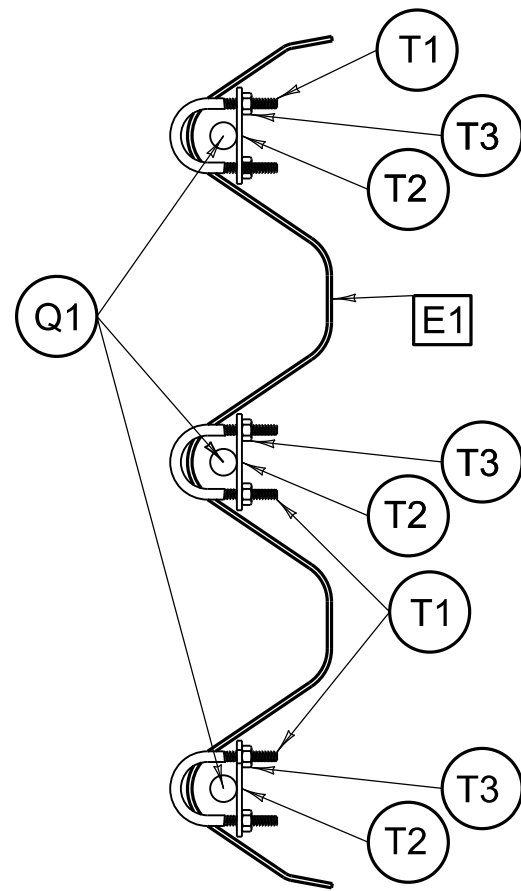


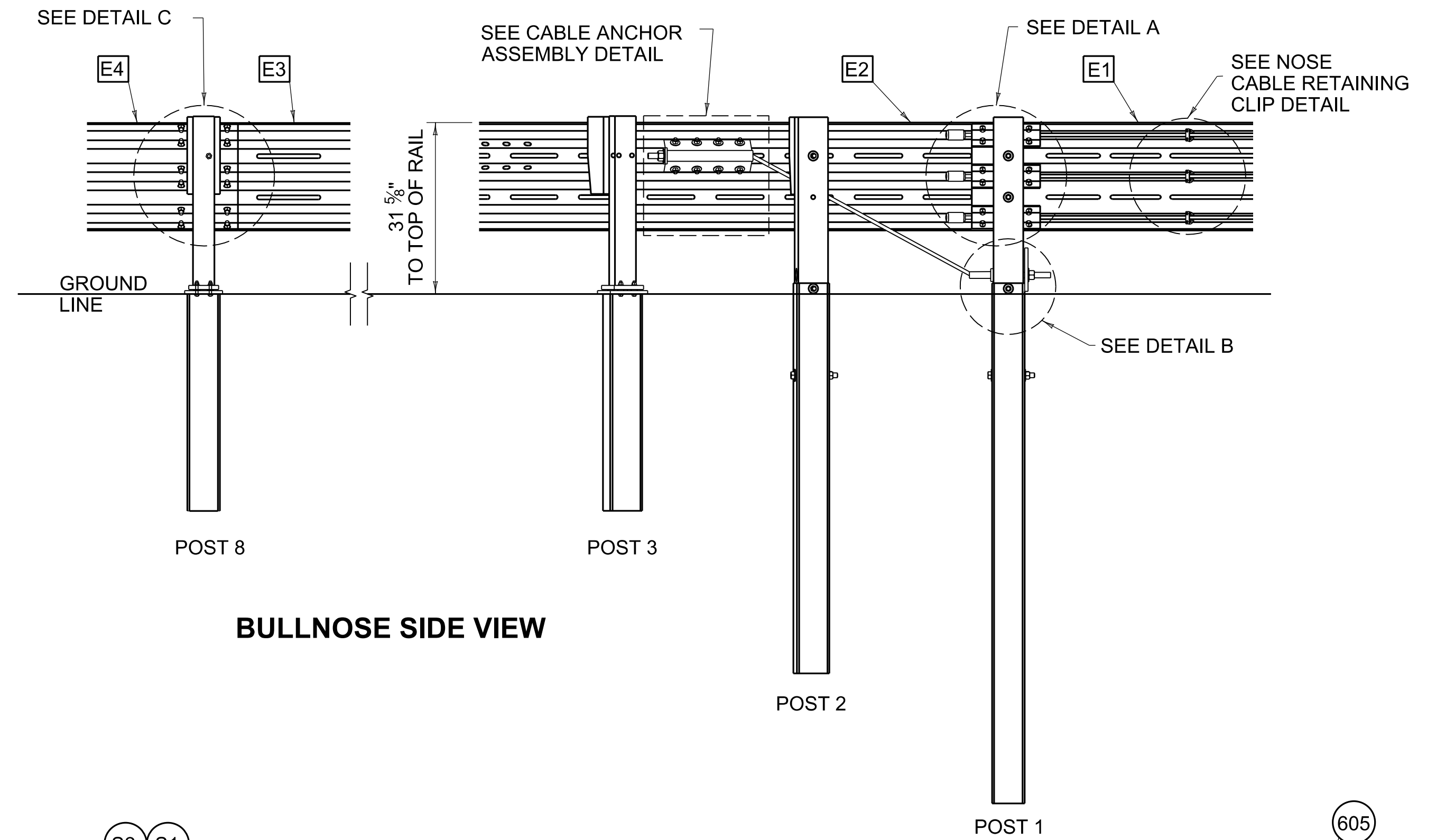
PROFILE VIEW
CABLE ANCHOR
ASSEMBLY CONNECTION



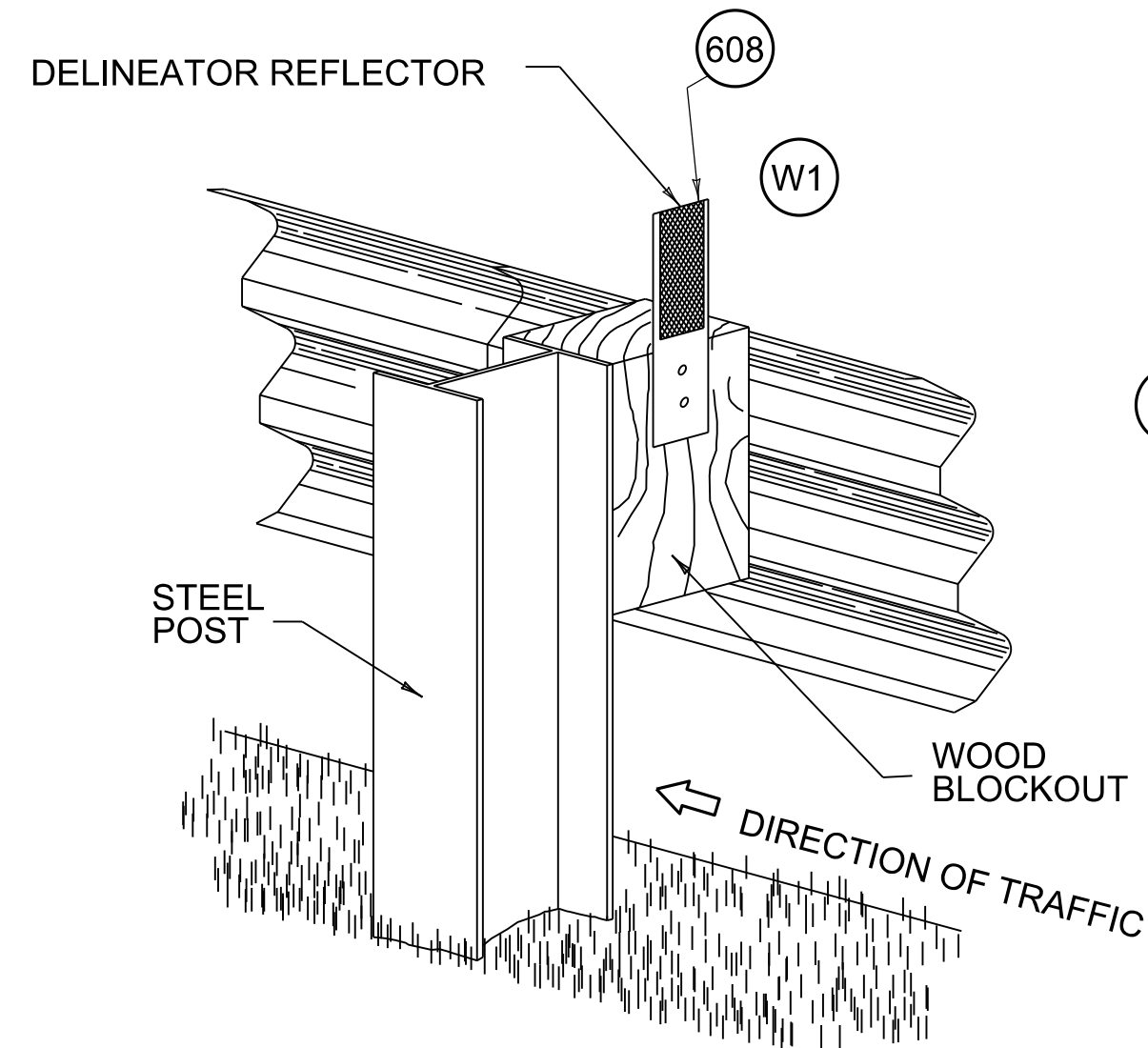
CABLE ANCHOR ASSEMBLY



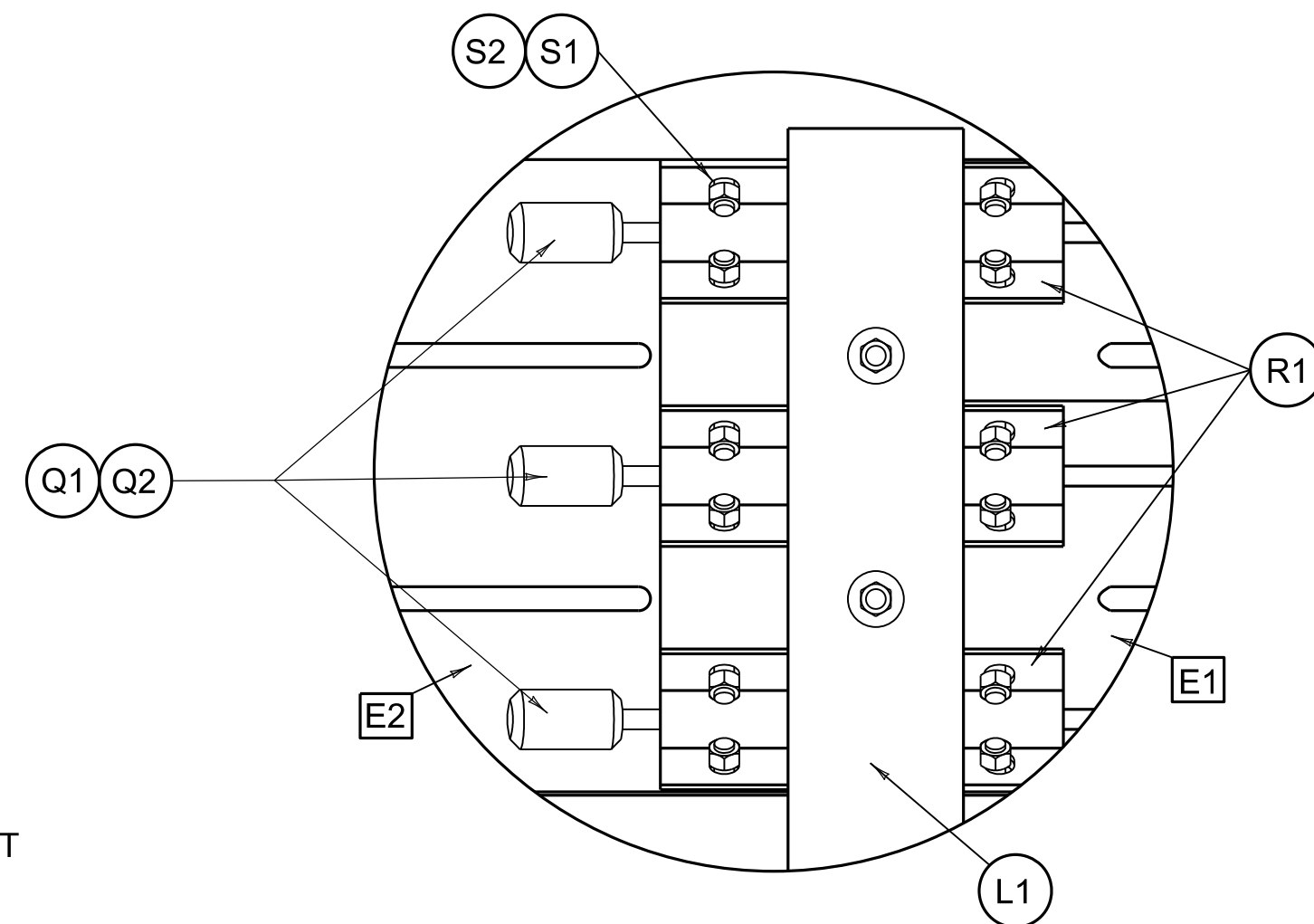
**NOSE CABLE
RETAINING CLIP**



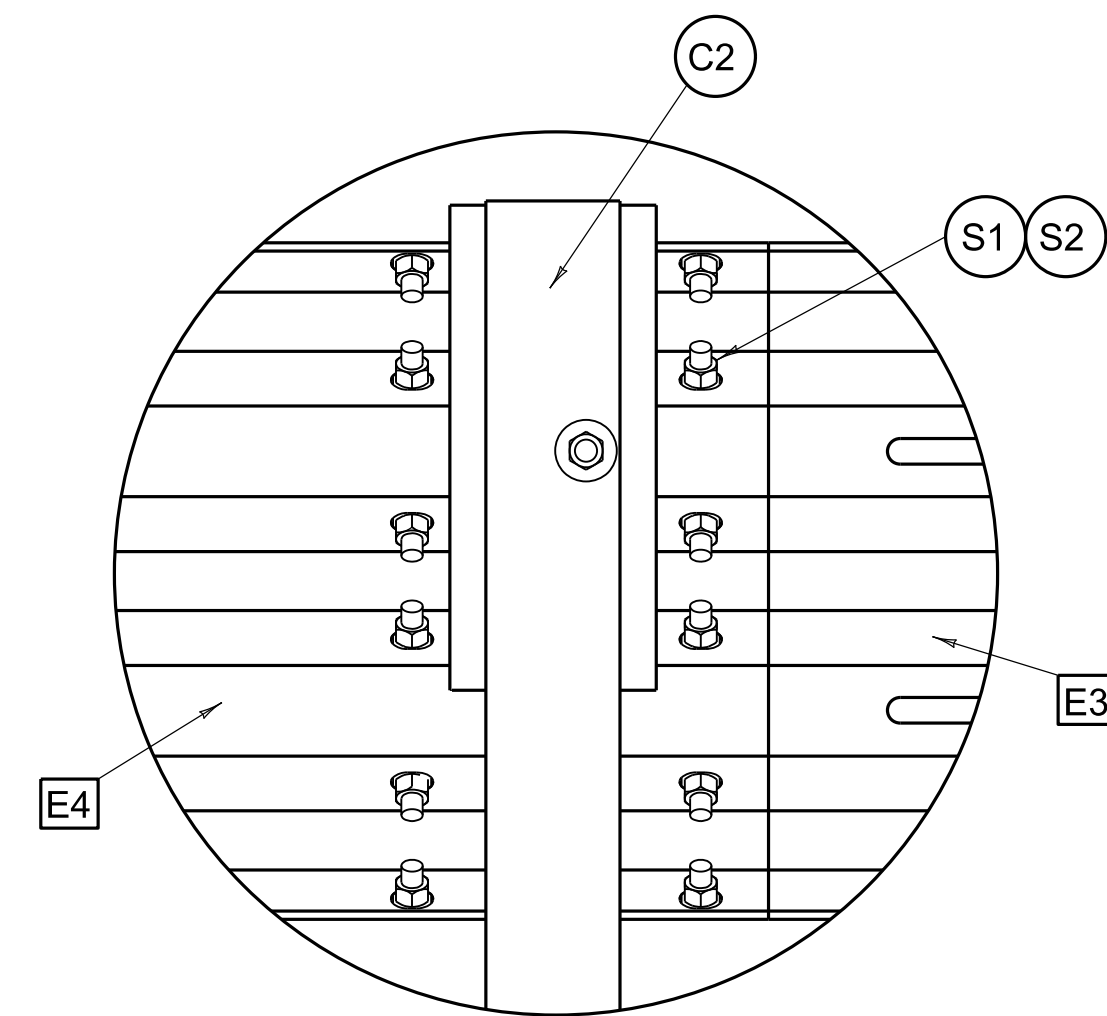
BULLNOSE SIDE VIEW



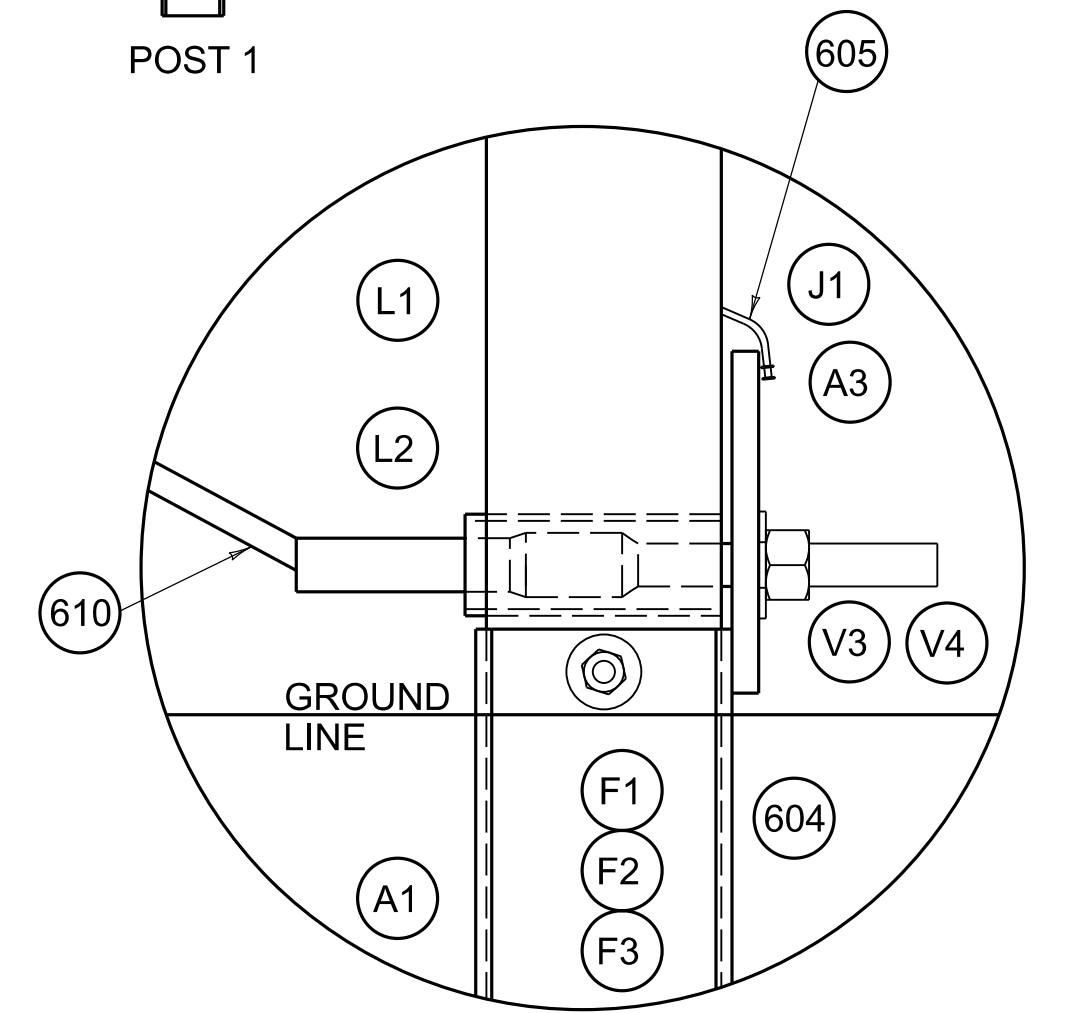
**ONE-SIDED REFLECTOR DETAIL
AND TYPICAL INSTALLATION**



DETAIL A



**DETAIL C
THRIE-BEAM SPLICE**



DETAIL B

~ NOTES ~

- 600 SEE SHEET 10 FOR PART DESCRIPTIONS.
- 601 SEE ANCHOR BRACKET ASSEMBLY DETAIL ON SHEET 10.
- 602 SEE ANCHOR CABLE ASSEMBLY DETAIL ON SHEET 10.
- 603 ONE WASHER BETWEEN BOLT HEAD AND RAIL AND BETWEEN NUT AND ANCHOR BRACKET ASSEMBLY.
- 604 ONE WASHER BETWEEN BOLT HEAD AND FOUNDATION TUBE AND BETWEEN NUT AND FOUNDATION TUBE.
- 605 BEND TWO NAILS OVER THE BEARING PLATE TO PREVENT ROTATION.
- 606 NO MATERIAL IS TO BE PLACED AGAINST THE VERTICAL FACES OF BEARING PLATE.
- 607 PREVENT OR REMOVE MATERIALS THAT BLOCK ACCESS TO BOLTS FOR POST ASSEMBLIES.
- 608 THE COLOR OF DELINEATORS MUST MATCH THE COLOR OF THE EDGELINE THEY SUPPLEMENT.
- 609 DELINEATOR SPACING SHOULD BE 100' WITH A MINIMUM OF 3 REFLECTORS. THE FIRST DELINEATOR SHOULD BE PLACED ON POST 3, ON THE ADJACENT TRAFFIC SIDE OF THE BULLNOSE.
- 610 ANCHOR CABLE ASSEMBLY INCLUDES PARTS V1, V2, V3, AND V4.



COMMONWEALTH OF KENTUCKY
DEPARTMENT OF HIGHWAYS



STEEL THRIE-BEAM BULLNOSE TERMINAL

SHEET 006: NOSE AND ANCHOR DETAILS

STANDARD DRAWING NUMBER
RBE-210

BARRIERS

REVISION DATE: 08/11/2025
REVISION NUMBER: 0

SUBMITTED *W. J. L. L.* 08-11-2025
DIVISION DIRECTOR DATE

APPROVED *J. B. L.* 08-11-2025
STATE HIGHWAY ENGINEER DATE